

### Applications

ASEPTISIL is an antimicrobial silicone that avoids contamination from the growth of bacteria, mold and fungi and protects the tubing against organisms that cause discolorations and bad odors and cross-contamination. It has been tested in accordance with ISO 22196:2011 on bacteria species as MRSA and E.Coli showing a reduction up to 99,9% of microbiological activity. Active ingredient in ASEPTISIL tubing works by neutralizing bacteria rapidly. The fact that it does not dissipate or release with use, makes it possible that the antimicrobial properties can be extended under normal conditions.

Unlike other similar antimicrobial tubing, ASEPTISIL is composed 100% of antimicrobial material guaranteeing its integrity and protection for the whole structure of the product.

It is especially recommended for food contact applications in the transport of liquid or semi-liquid fluids in the food and beverage industries. It offers an extremely broad field of applications, especially effective where there is intermittent use of water or other fluids in warm conditions without the possibility of drying between uses.

### Limitations

Mind the chemical compatibility of the fluid with the silicone.

This type of hose is not recommended for operation with negative pressure (vacuum)

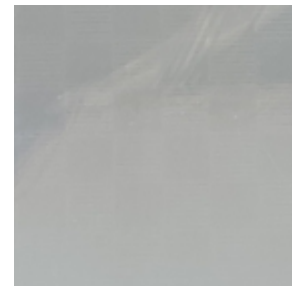
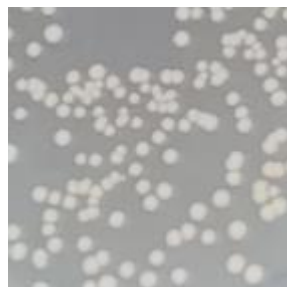
This product is not recommended for the transport of abrasive particles.

### Regulations

Platinum cured silicone produced in compliance with:

- US FDA Standard 21 CFR 177.2600.
- ResAp 2004 (5), according to Reg 1935/2004/EEC, and Reg 10/2011/EEC
- Tested in accordance with ISO 22196:2011 on E.coli and MRSA
- Active substance in accordance with the Biocidal Product Regulation (EU) 528/2012

Silicone rubber used is in accordance with EU Directive 2002/95/ECC for Restriction of the use of hazardous substances (RoHS)



*Standard silicone, after 24h. Bacteria growth.      Aseptisil silicone, after 24h. No bacteria.*

### Properties

- Permanent antimicrobial product protection. Non releasing technology that prevent of superficial biofilm formation.
- Exhaust cleaning processes no needed between uses.
- Protects the tubing from bacteria, mold and fungi growth.
- Odorless, tasteless, and completely non-toxic.
- Suitable for milk and alcoholic beverages transfer.
- Active ingredient throughout the tubing. Not only as an inner layer.
- Operational temperature range from -60°C (-76 F) to +200°C (392 F), it may reach up to 220°C (428 F) during short periods of time.
- The standard manufacturing length is 25 meters long (82.02 ft), although they can be manufactured in any length required.
- Indelible traceability through laser marking with part number, reference description and internal diameter.

### Construction

This reference is manufactured with antimicrobial VMQ (Vinyl-Methyl Quality) silicone.

### Technical Specifications

In the below table, there are some of the diameters that can be manufactured, for more diameters please consult your sales office:

Inner Diameter		Tolerance		Outer Diameter		Tolerance		Thickness		Tolerance			
(mm)	(inch)	(mm)	(inch)	(mm)	(inch)	(mm)	(inch)	(mm)	(inch)	(mm)	(inch)		
1,59	0,06	1/16	0,25	0,0098	4,76	0,19	3/16	0,75	0,0295	1,585	0,062	0,25	0,0098
2,38	0,09	3/32	0,25	0,0098	5,56	0,22	7/32	0,75	0,0295	1,59	0,063	0,25	0,0098
3,18	0,13	1/8	0,25	0,0098	6,35	0,25	1/4	0,75	0,0295	1,585	0,062	0,25	0,0098
3,18	0,13	1/8	0,25	0,0098	7,94	0,31	5/16	0,85	0,0335	2,38	0,094	0,30	0,0118
3,18	0,13	1/8	0,25	0,0098	9,52	0,37	3/8	0,85	0,0335	3,17	0,125	0,30	0,0118
4,76	0,19	3/16	0,30	0,0118	7,94	0,31	5/16	0,80	0,0315	1,59	0,063	0,25	0,0098
4,76	0,19	3/16	0,30	0,0118	9,52	0,37	3/8	0,90	0,0354	2,38	0,094	0,30	0,0118
4,76	0,19	3/16	0,30	0,0118	11,11	0,44	7/16	0,90	0,0354	3,17	0,125	0,30	0,0118
6,35	0,25	1/4	0,30	0,0118	9,52	0,37	3/8	0,80	0,0315	1,585	0,062	0,25	0,0098
6,35	0,25	1/4	0,30	0,0118	12,70	0,50	1/2	0,90	0,0354	3,17	0,125	0,30	0,0118
7,94	0,31	5/16	0,30	0,0118	12,70	0,50	1/2	0,90	0,0354	2,38	0,094	0,30	0,0118
9,52	0,37	3/8	0,35	0,0138	14,29	0,56	9/16	0,95	0,0374	2,38	0,094	0,30	0,0118
9,52	0,37	3/8	0,35	0,0138	15,88	0,63	5/8	0,95	0,0374	3,18	0,125	0,30	0,0118
11,11	0,44	7/16	0,35	0,0138	14,29	0,56	9/16	0,85	0,0335	1,59	0,063	0,25	0,0098
12,70	0,50	1/2	0,35	0,0138	19,05	0,75	3/4	0,95	0,0374	3,17	0,125	0,30	0,0118
15,88	0,62	5/8	0,35	0,0138	22,22	0,87	7/8	0,95	0,0374	3,17	0,125	0,30	0,0118
19,05	0,75	3/4	0,40	0,0157	25,40	1,00	1	1	0,0394	3,17	0,125	0,30	0,0118